

NORCAN

UNLIMITED CREATIVE SOLUTIONS

Flow optimisation solutions

for logistics and e-commerce players

Solutions designed for you



Stéphane FAUTH
Norcan of CEO

Founded in 1987, NORCAN is a leader in France and among the first in Europe in the field of modular and tailor-made mechanically-assembled solutions based on aluminum profiles.

NORCAN serves Industry, Logistics and Distribution as well as e-Commerce operators.

We have a system, applications and solutions that make it possible to respond to the performance challenges of industrial installations and flows, by improving ERGONOMICS and SAFETY as well as AGILITY and PRODUCTIVITY.

We are proud to support our Customers towards THE FACTORY OF THE FUTURE, particularly with the integration of the SHERPA range of mobile robots.

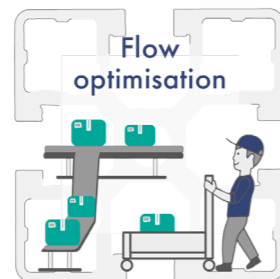


Your local partner

NORCAN benefits from a network of regional advisors in France and abroad internationally in 15 countries. Our Technical-Sales Engineers provide all the advice and expertise necessary for the success of our clients' projects. They listen to your needs and seek to understand how your areas of activity work to better guide you.

NORCAN

Modular and Tailor-made Solutions



My **NORCAN.com**

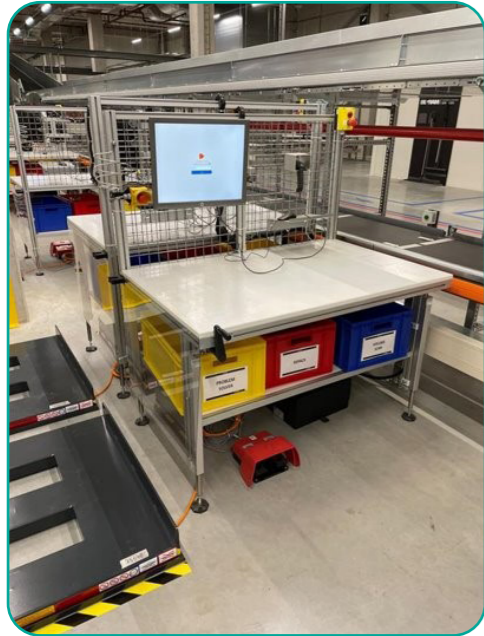
Thousands of customers for over 35 years



My **NORCAN.com**

Equipment adapted throughout your process

NORCAN solutions enable efficiency gains, a reduction in the risk of MSDs and an increase in productivity. Norcan's strength is to be able to design and create equipment completely adapted to your needs and those of your employees.



RECEIVE & RETOUREN



scraper system for pulling cartons forward of the station

Height adjustable worktop (through a gas cylinder with guide): allows to adapt the height of the table in relation to the height of the boxes, by a simply pushing your hand on the table



- 3 handles (2 on the side 1 on the back)
- Transparent Plexiglass on the sides
- Grid on the bottom
- 4 free wheels with brake
- Sliding Dividers



CARTS FOR PICKING & REBIN



4 Telescopic hydraulic legs with one pump hand drive

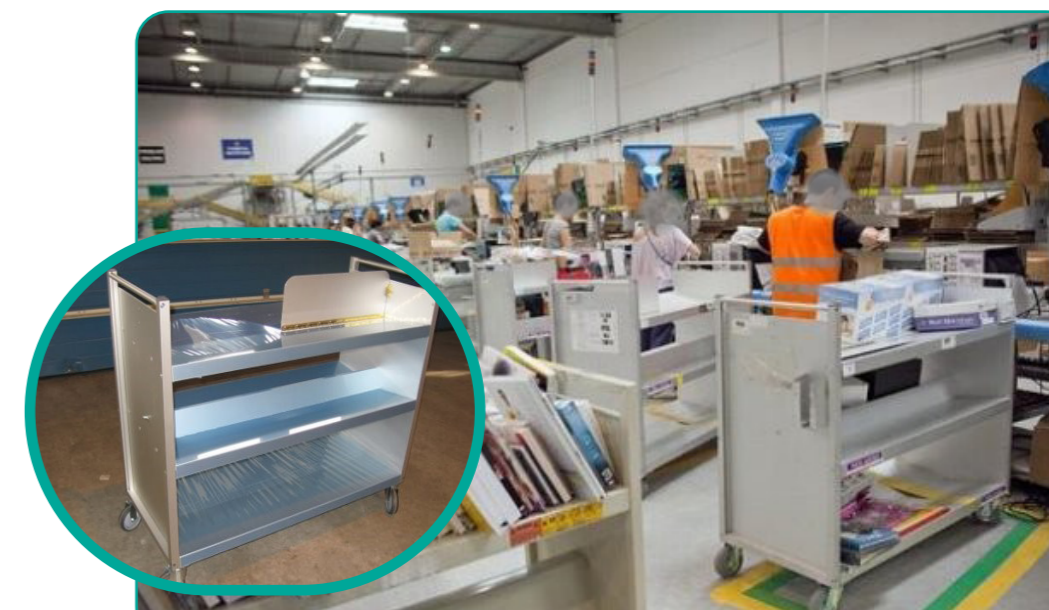
SORTER



FOLDED



UNFOLDED



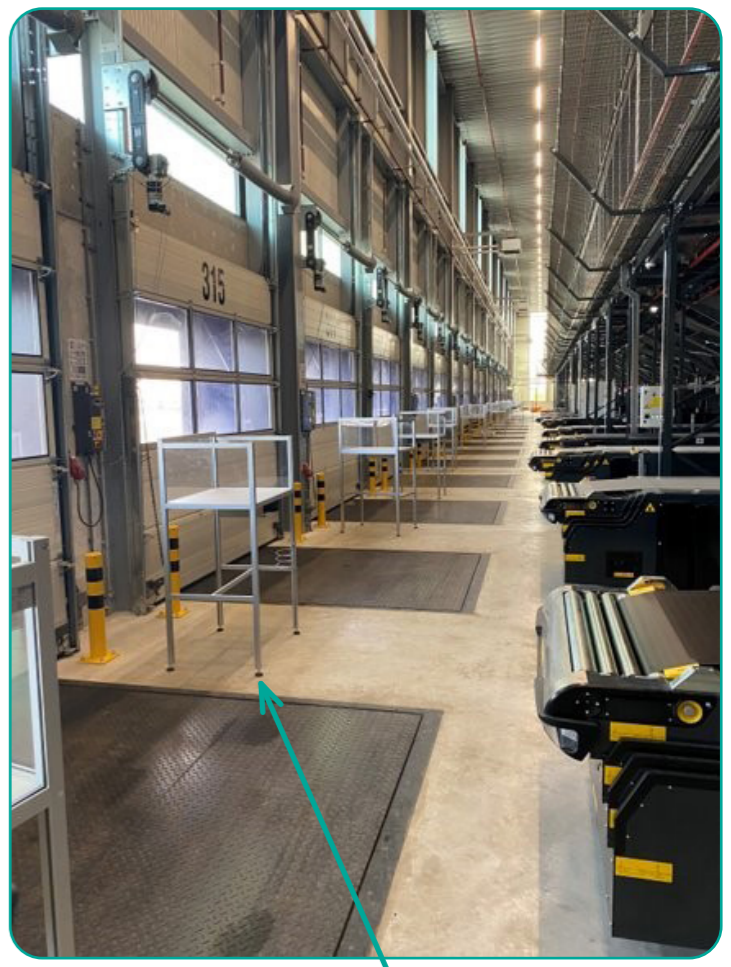


In situation



In our plant – for validation
Assembling and testing of one
table, before starting series.

With a team of specialists dedicated to logistics and e-commerce projects, we will be able to offer you a solution completely adapted to your needs.



Standing desk docks
with wind protection for the shipping
and receiving documentation

PACKING & EXPEDITION



shelf fixed on a
spring, to guarantee
the constant level

In situation



Shelf connected
to the conveyor



Cardboard storage



My **NORCAN**.com

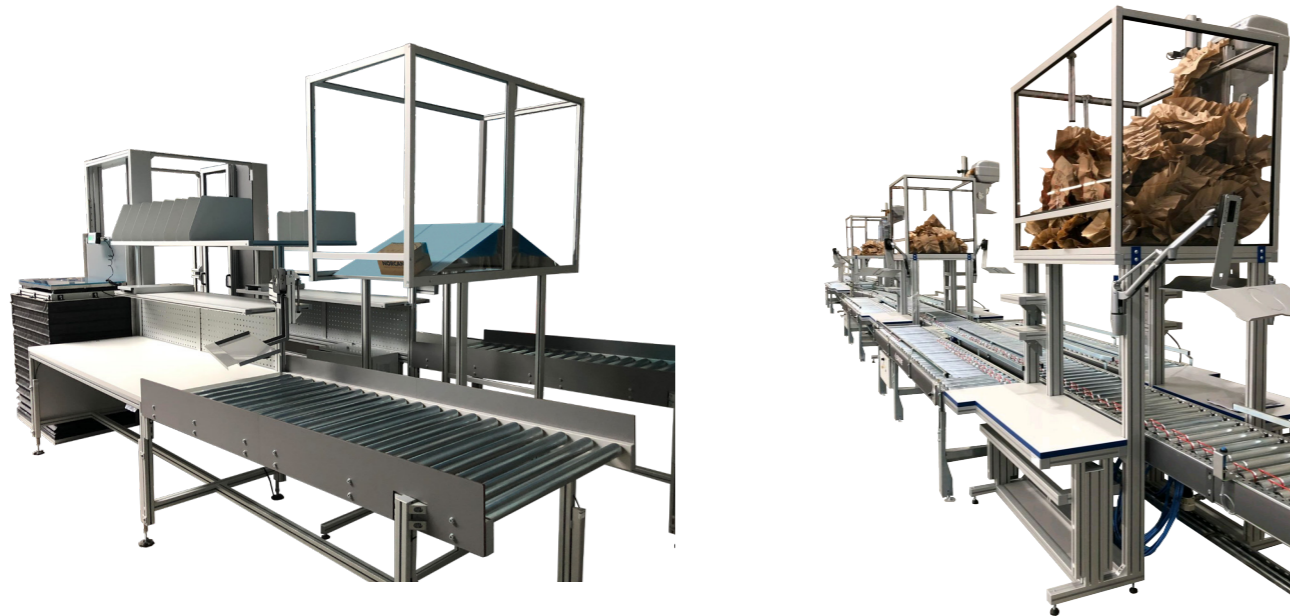


See all our use cases in video

integrated lines

For the integration of complete solutions.

NORCAN offers complete and integrated solutions by combining its families of applications. Our local advisors, accompanied by technical experts, develop for our customers the solutions best suited to their manufacturing flows and processes. In order to support our customers towards the factory of the future, **NORCAN** integrates various forms of intelligence into its solutions, including the **SHERPA** range of mobile and collaborative robots.



A collaborative and complete robotics solution.

To support you towards the factory of the future, Norcan relies on the complete range of SHERPA® autonomous mobile robots. By combining mobile robotics with our historical skills in workspace layout and optimization of intralogistics flows, we offer you complete, turnkey solutions.

SHERPA
by SMR



SHERPA B



SHERPA P



SHERPA D



SHERPA F

ROBOTS FOR YOUR ACTIVITY



To best meet your needs, Norcan, personalizes and adapts the upper modules of SHERPA® robots while creating the equipment devices that will optimize your flows and production process.

Optimized navigation intelligence and robot mapping makes it possible to record data from the environment and make it evolve in complete safety.

Sherpa's AMR are designed and manufactured in France.

Throughout the chain

DISTRIBUTION LOGISTICS

- AMR in follow-me / standalone / zone modes
- Order preparation and packing solutions
- Rolling and handling flow

PRODUCTION INTRALOGISTICS

- Handling flows
- Kitting, line edge feeding, part transfers
- Palletizing / depalletizing / bulking / unloading

SPECIFIC SOLUTIONS

- Special automated/robotic applications
- Packaging/shipping lines
- Smart Storage

+ infos



SMART STORAGE



OUR ERGONOMIC SOLUTIONS

Ergonomic arrangements make it possible to increase productivity but also to reduce the risks of MSDs for operators by providing them with equipment adapted to their missions and their body types.

Make sure equipment is easily accessible and tidy. To do this, it is possible to install bins, tool supports, specific storage or articulated arms.

Also consider creating specific areas for different tasks and make sure each area has the equipment needed for that task. For better organization of spaces distinguish workstations dedicated to editing those dedicated to packaging or shipping. Their roles are not the same, it is important that the equipment is adapted.



Watch this use case

ERGONOMIC EQUIPMENT



Toolholders



Screen support



Height adjustment



Lockable drawers



Trashbag holder



Scanner support



Fixed cutter



Rolls support



Keyboard drawer



Printer support

