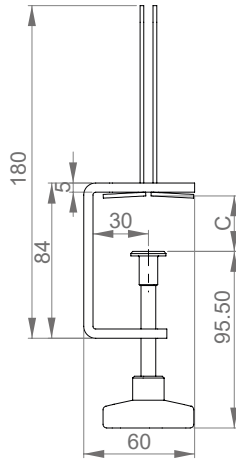
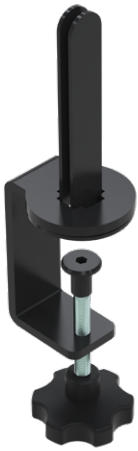




Panel holder



SPECIFICATIONS

Reference	Panel holder S (compatible with tabletop/work surface C = 15-35mm) Panel holder L (compatible with tabletop/work surface C = 30-50mm)	ACC-N139100 ACC-N139200
Description	To mount panels from 3 to 5 mm on a work surface without any drilling (auto tightening system), ergonomic tightening without any tool, 2 possible orientations.	
Materials	Coated steel, polyamide	

COMPONENTS

1x Mounting bracket	
1x Clamping plates	
1x Sleeve nut	
1x Clamping knob M8 x 60 (S version) Clamping knob M8 x 40 (L version)	

