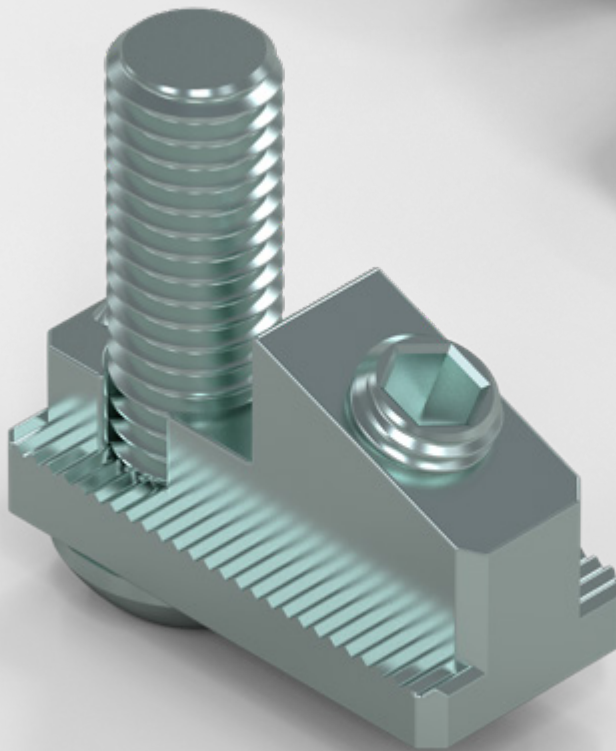


NEW

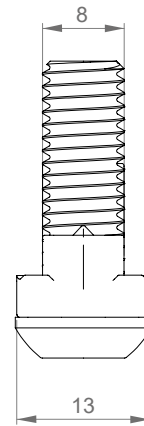
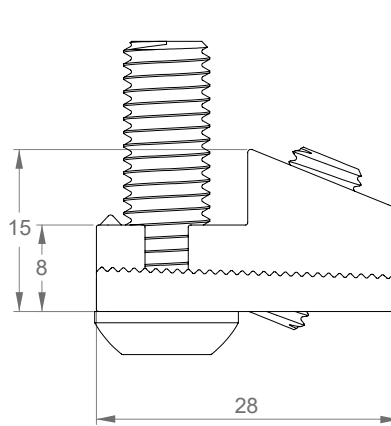
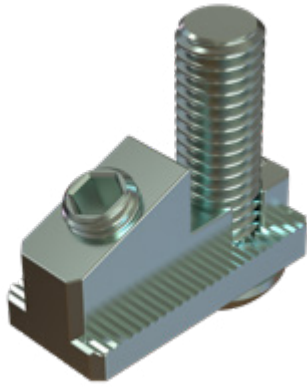


Play video
new



Play video
adjustable coupling

Anti-rotation adjustable coupling



SPECIFICATIONS

Reference	Anti-rotation adjustable coupling	ACC-N119900
Description	<p>Allows for the perpendicular assembly of a profile on the slot of another NORCAN profile.</p> <ul style="list-style-type: none"> - easy implementation (one M8 tapping at the end of the profile) - for the assembly of profiles that need to be adjustable - for the assembly of profiles where it is not possible to use a single central screw, for instance cross connections - ensures electrical continuity \oplus 	
Material	Zinc-plated cast steel	

COMPONENTS

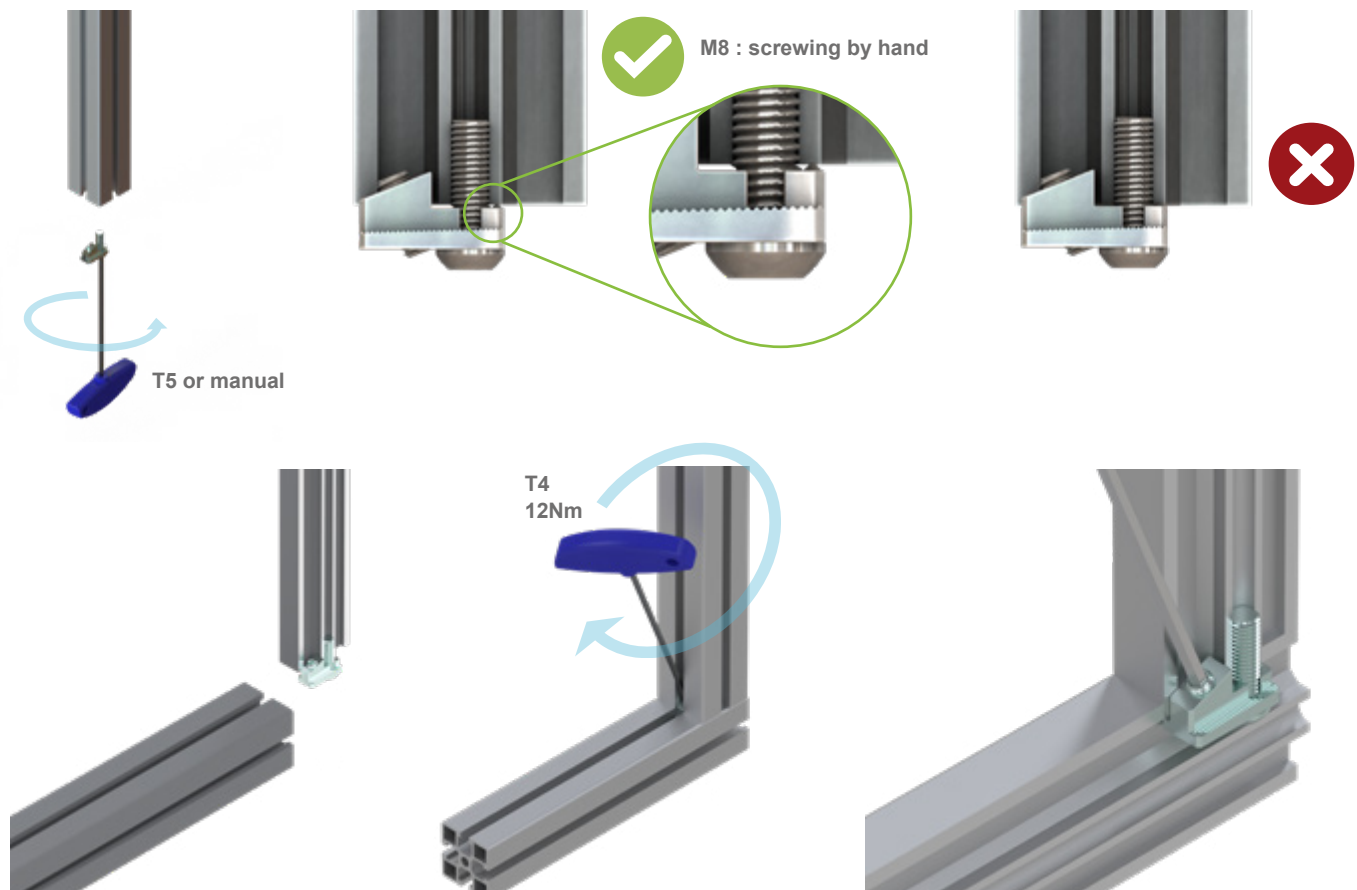
1x Body in zinc-plated cast steel



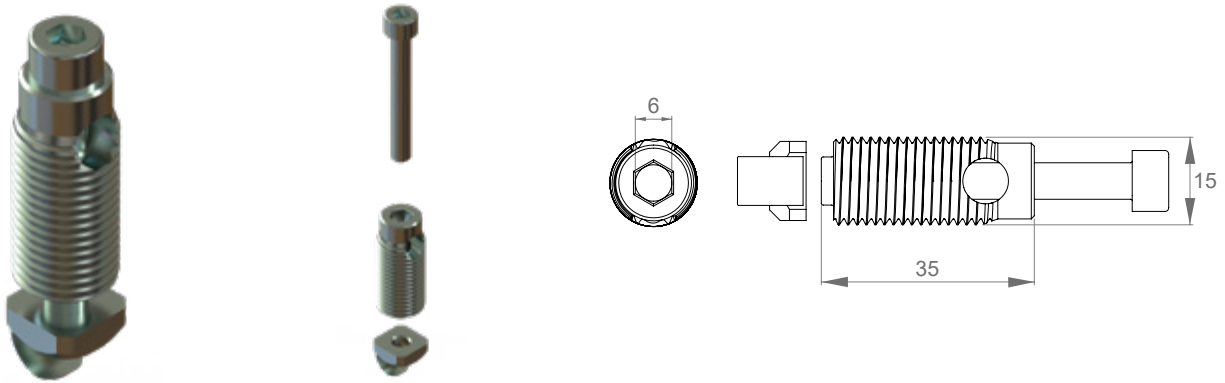
1x M8x20 zinc-plated round socket head screw



1x M7x16 zinc-plated headless socket screw



Machining-free coupling

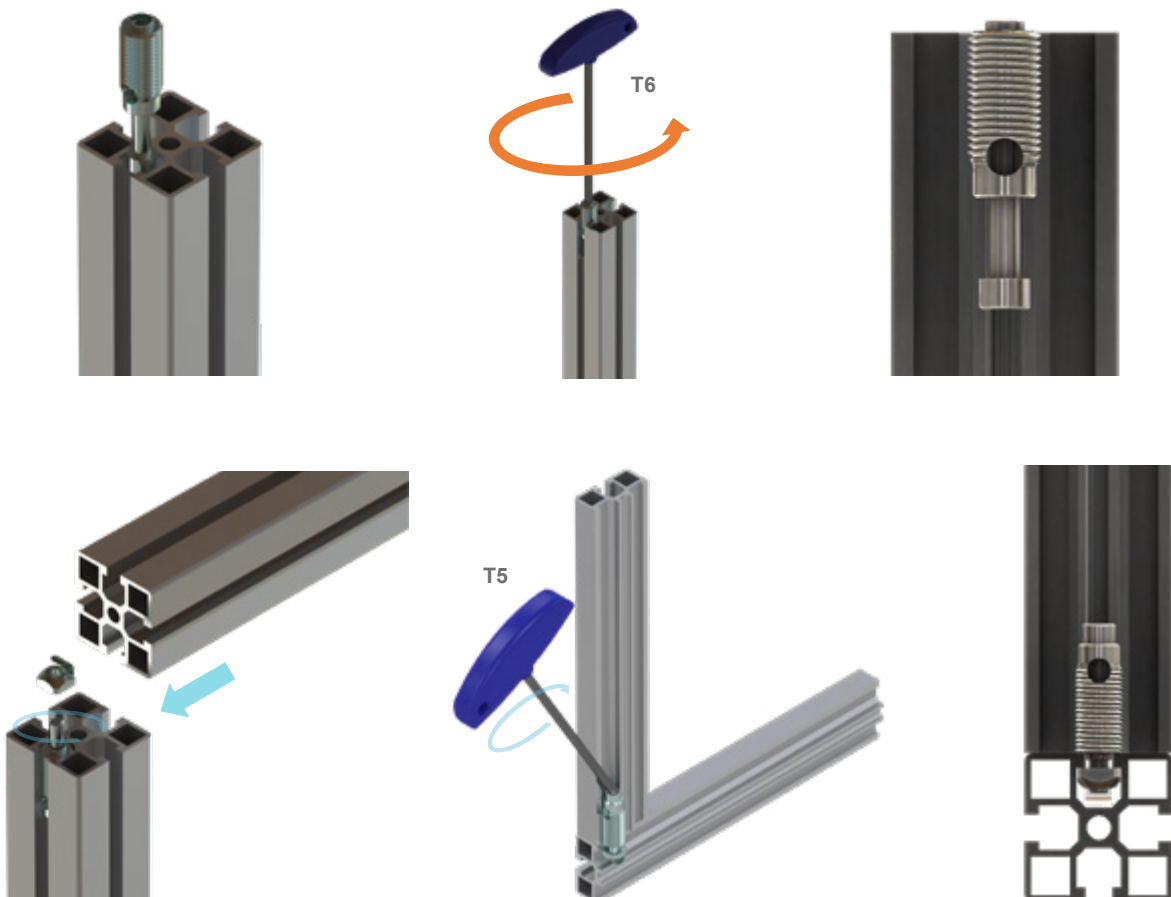


SPECIFICATIONS

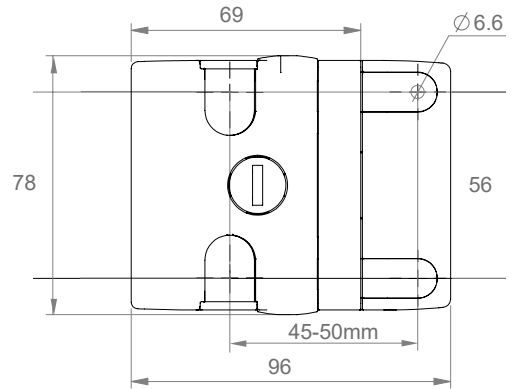
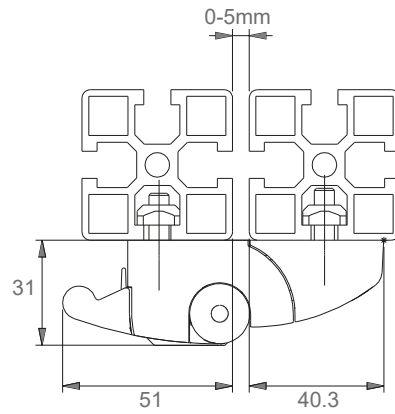
Reference	Machining-free coupling	ACC-N119800
Description	<p>Allows for the perpendicular assembly of two NORCAN profiles by their slots.</p> <ul style="list-style-type: none"> - easy implementation (does not require any machining of profiles/ is not suited for heavy profiles) - for the assembly of profiles that need to stay adjustable - for the assembly of profiles where it is not possible to use a single central screw, for instance cross connections 	
Material	Zinc-plated steel	

COMPONENTS

1x Body in zinc-plated cast steel	
1x M6x45 zinc-plated socket head screw	
1x M6 zinc-plated spring nut	



Latch with handle and key



SPECIFICATIONS

Reference	Latch with handle and key	ACC-N143500
Description	For sliding doors or swinging doors where the outer side is aligned with the structure of the frame	
Material	Black coated cast aluminium	

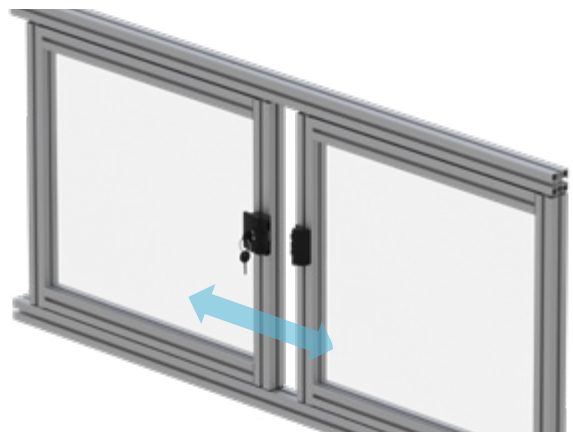
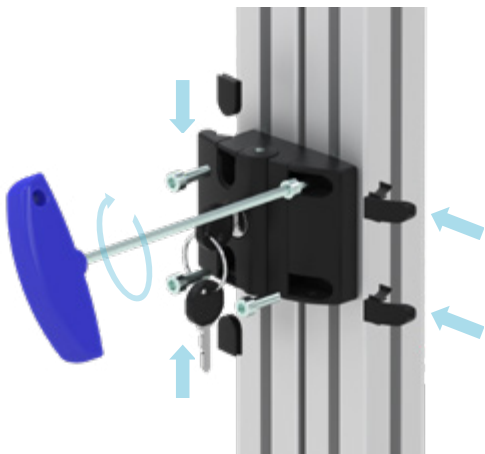
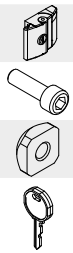
COMPONENTS

1x Latch with handle

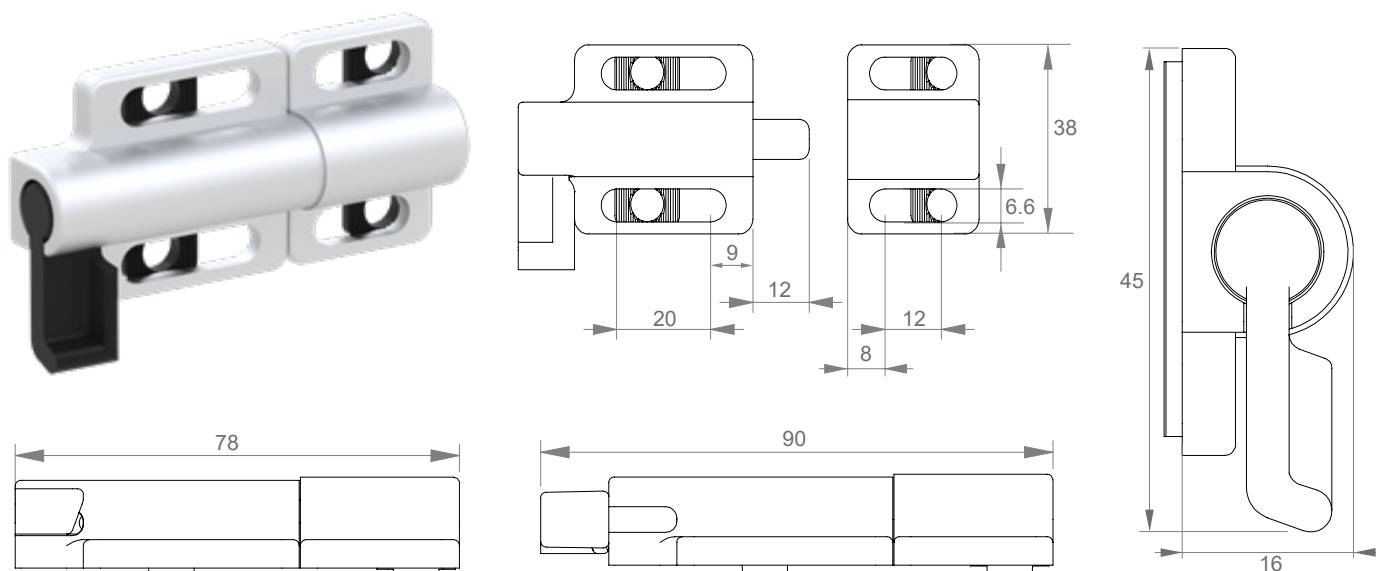
4x M6x20 zinc-plated socket head screw

4x M6 zinc-plated 13x13 nut

2x Key



Door latch with manual locking

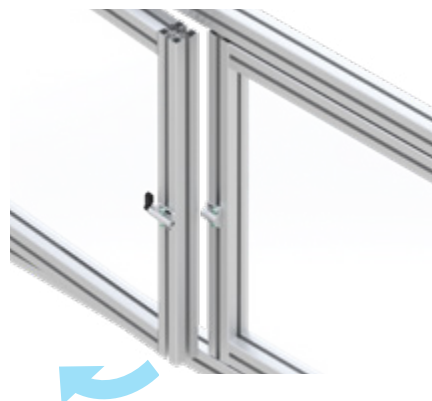
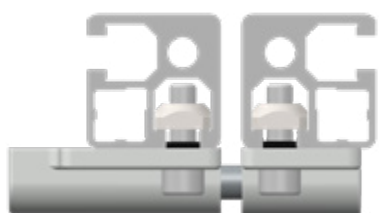
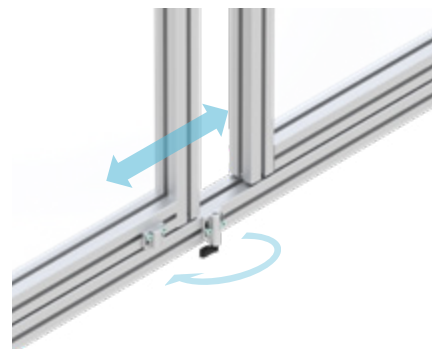
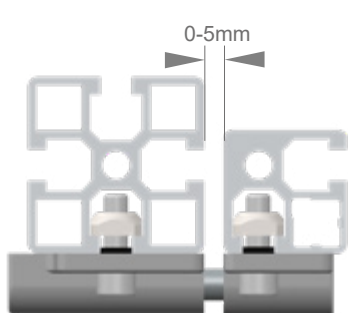


SPECIFICATIONS

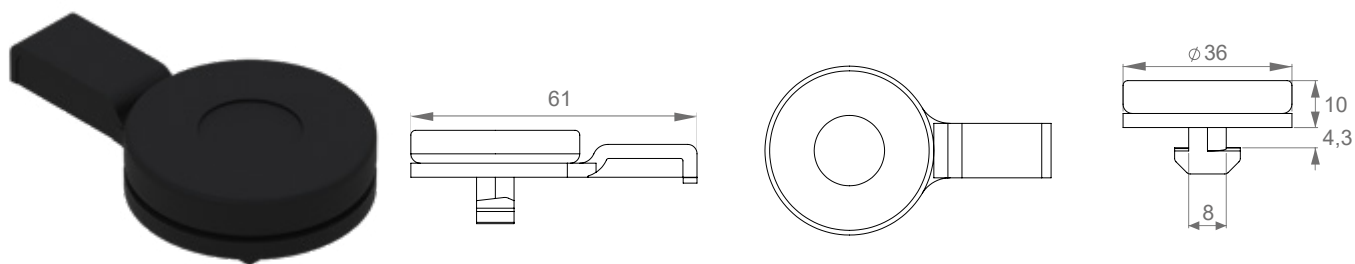
Reference	Door latch with manual locking	ACC-N142400
Description	For sliding doors or swinging doors where the outer side is aligned with the structure of the frame	
Material	Zinc die-cast support, stainless steel axle, black plastic PA	

COMPONENTS

1x Door latch + slot fixation strips	
4x M6x20 zinc-plated socket head screw	
4x M6 zinc-plated 13x13 nut	

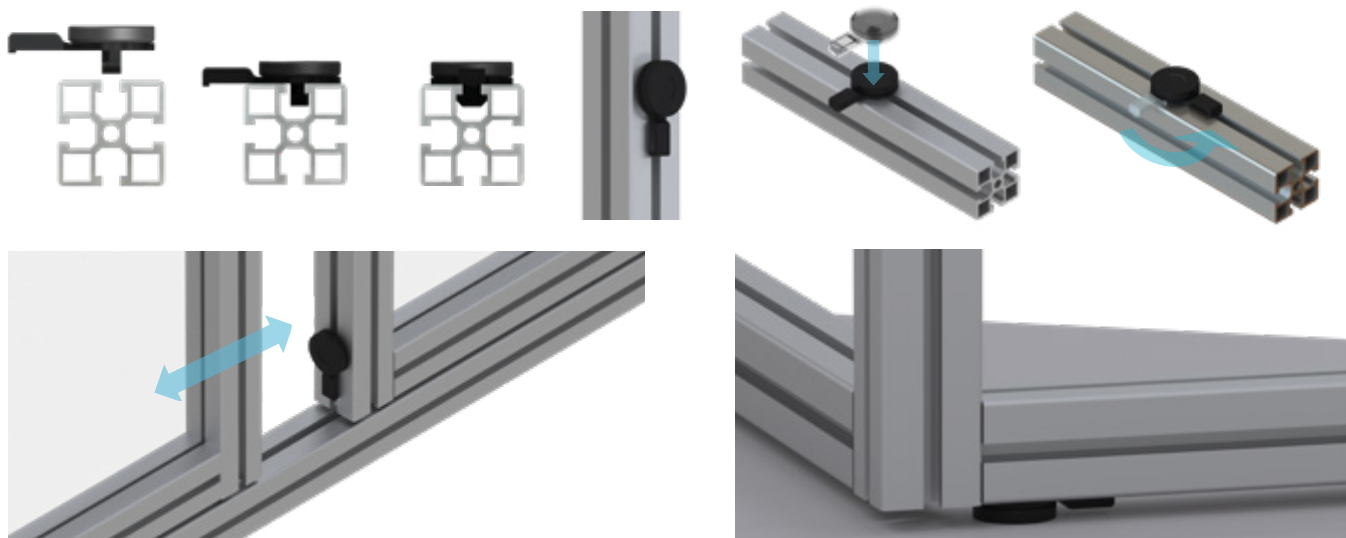


Foot quarter turn/stop

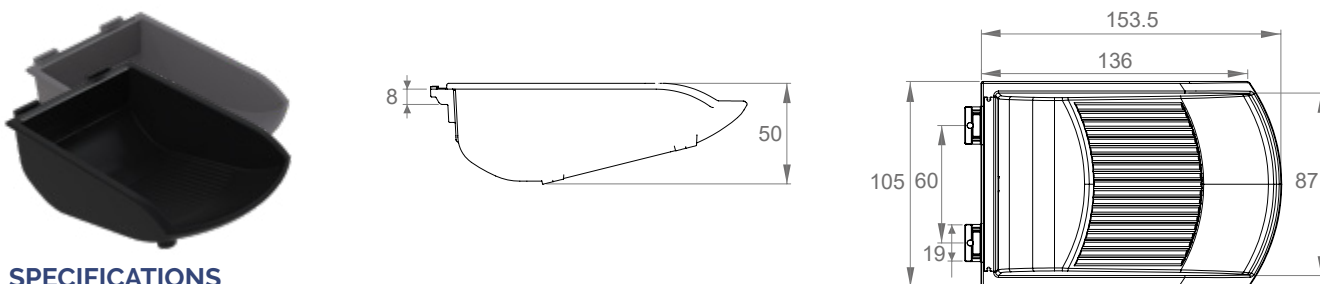


SPECIFICATIONS


Reference	Foot quarter turn/stop	ACC-N124500
Description	Has to be mounted in a slot. The assembly and disassembly are performed without using any tools	
Material	Plastic PA reinforced with an elastomer pad (TPE 70 Shore A). Anti -vibration and anti-slip	

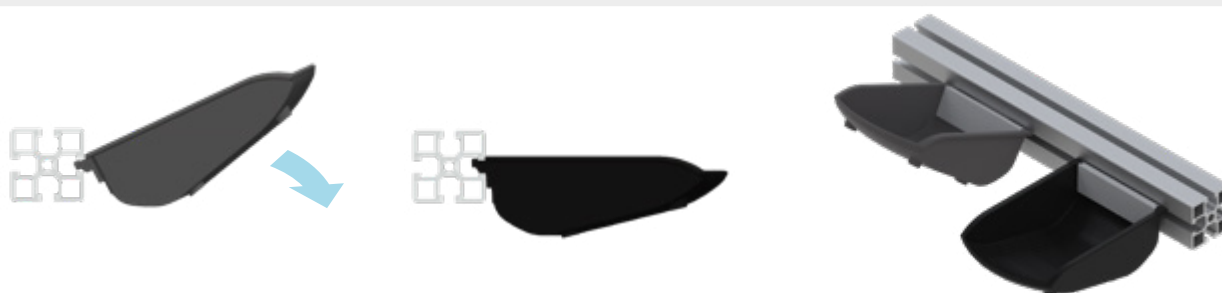


Parts tray

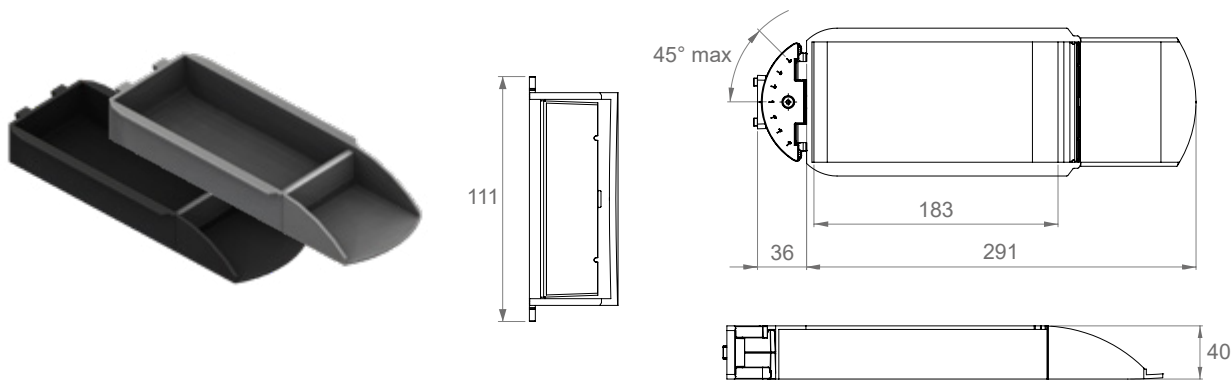


SPECIFICATIONS

References	Parts tray (grey RAL7042) Parts tray ESD (black) 	ACC-N164100 ACC-N164600
Description	Has to be mounted in a slot or laid down on its 4 anti-slip pads. Including a label-holder (88 x 22 mm)	
Material	Reinforced plastic PA	



Parts tray with storage

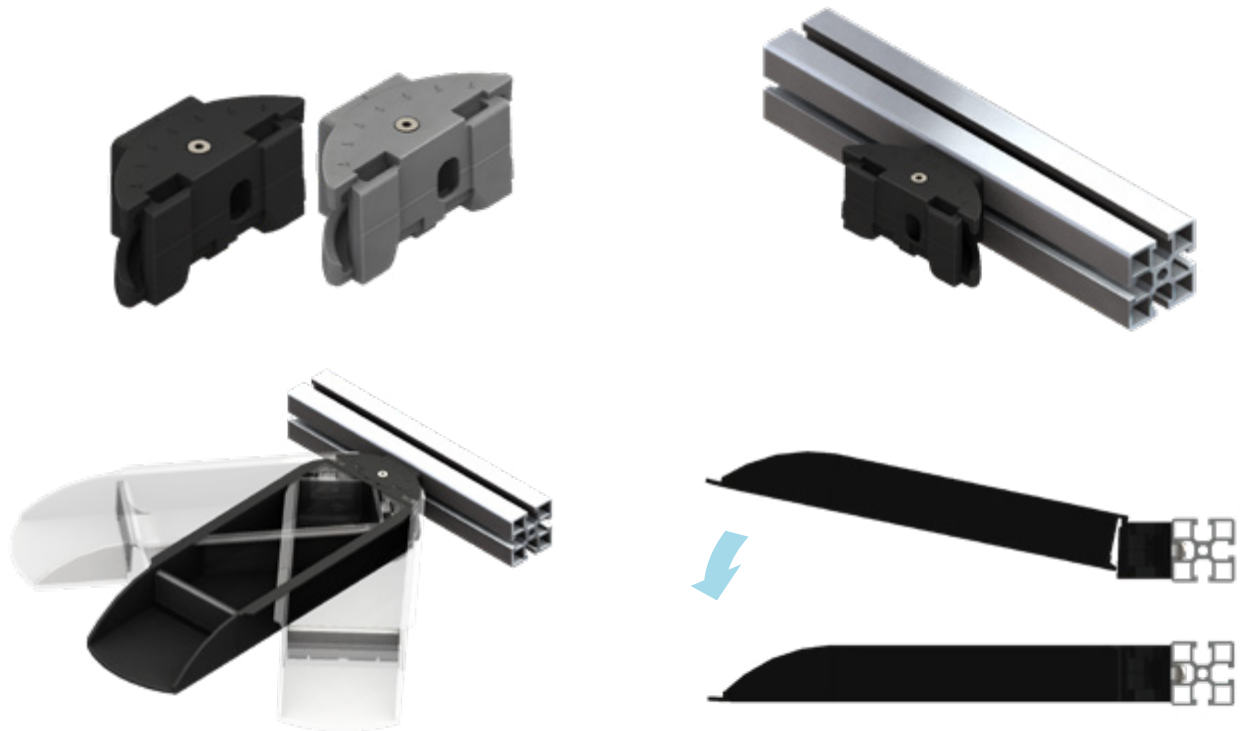


SPECIFICATIONS

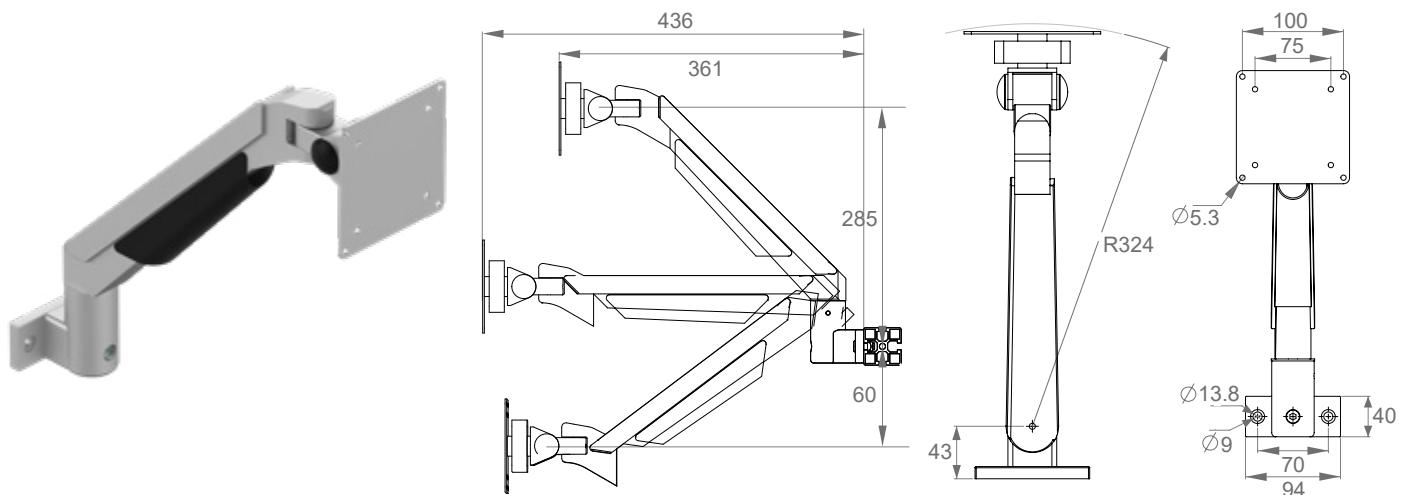
References	Rotating/swivel parts tray with storage (grey RAL7042)	ACC-N164200 ⁽¹⁾
	— Parts tray with storage (grey RAL7042)	ACC-N264200 ⁽²⁾
	— Pivot for parts tray with storage (grey RAL7042)	ACC-N164500 ⁽³⁾
	Rotating/swivel parts tray with storage ESD (black)	ACC-N164800 ⁽⁴⁾
	— Parts tray with storage ESD (black)	ACC-N264800 ⁽⁵⁾
	— Pivot for parts tray with storage ESD (black)	ACC-N164900 ⁽⁶⁾
Description	Has to be mounted in a horizontal slot. Including a label-holder (88 x 22 mm). Amplitude from -45° to 45°, adjustable with a clamping screw	
Material	Reinforced plastic PA	

COMPONENTS

	(1)	(2)	(3)				
1x Parts tray with storage	●	●		●	●		
1x Pivot for parts tray with storage	●		●	●		●	
1x M8x20 zinc-plated low socket head screw	●		●	●		●	
1x Zinc-plated 13x13 nut	●		●	●		●	



Articulated monitor holder/arm 4-axis



SPECIFICATIONS

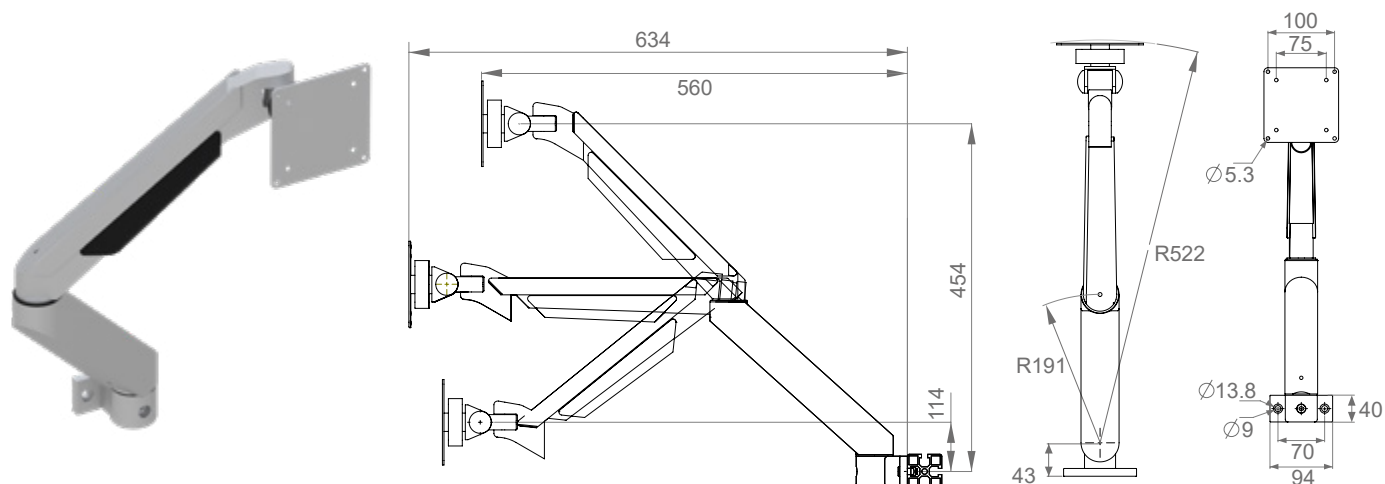
Reference	Articulated monitor holder/arm 4-axis	ACC-N186100
Description	Mounting system for monitors with a standard VESA connection (75-100) Load balancing by a gas cylinder from 2 to 8 kg	
Material	Coated cast aluminum, black plastic, steel	

COMPONENTS

1x Articulated monitor holder/arm 4-axis	
2x M8x20 zinc-plated low socket head screw	
2x M8 zinc-plated 13x13 nut	
4x M5x16 zinc-plated round socket head screw	
4x M4x16 zinc-plated round socket head screw	
4x M5 zinc-plated washer	



Articulated monitor holder/arm 5-axis

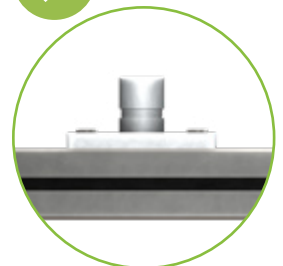
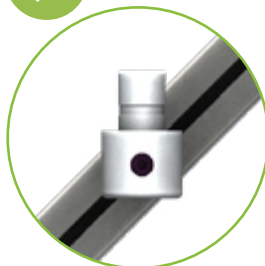
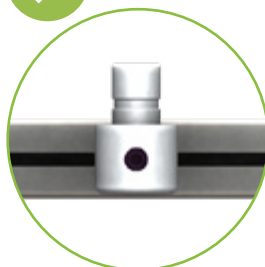
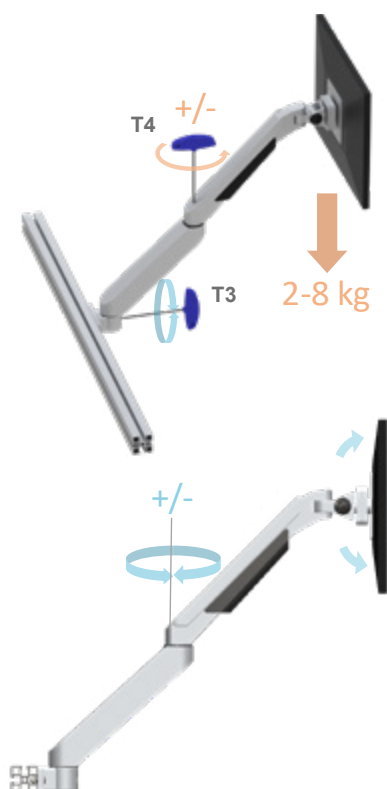


SPECIFICATIONS

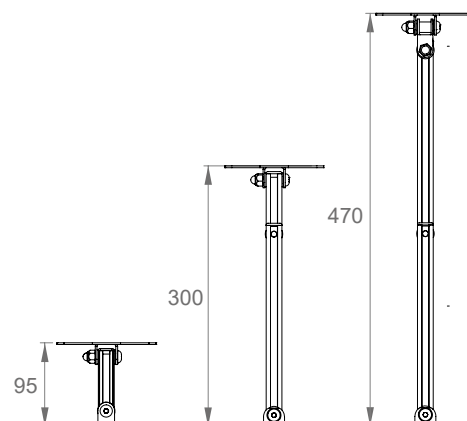
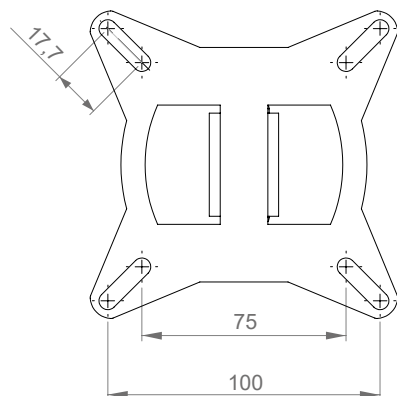
Reference	Articulated monitor holder/arm 5-axis	ACC-N186200
Description	Mounting system for monitors with a standard VESA connection (75-100) Load balancing by a gas cylinder from 2 to 8 kg	
Material	Coated cast aluminum, black plastic, steel	

COMPONENTS

1x Articulated monitor support 5-axis	
2x M8x20 zinc-plated low socket head screw	
2x M8 zinc-plated 13x13 nut	
4x M5x16 zinc-plated round socket head screw	
4x M4x16 zinc-plated round socket head screw	
4x M5 zinc-plated washer	



Adjustable arm for flat screens

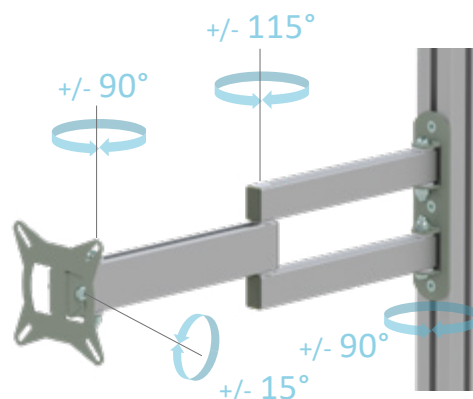
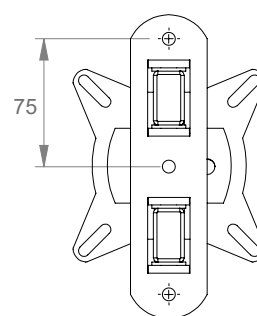
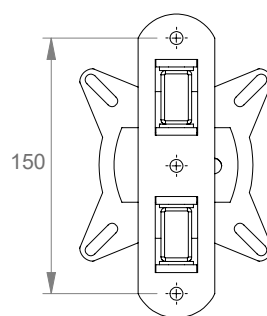
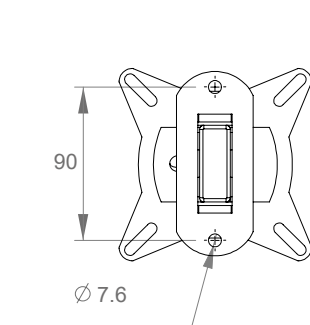


SPECIFICATIONS

References	Adjustable arm for flat screens L = 95mm (2 axis)	ACC-N186600
	Adjustable arm for flat screens L = 300mm (3 axis)	ACC-N186700
	Adjustable arm for flat screens L = 470mm (3 axis)	ACC-N186800
Description	- Mounting system for monitors with a standard VESA connection (75-100)	
	- Maximum load : 15kg	
	- Maximum torque before sliding on the pivot of the VESA support (tilting axis): 4Nm (2.5Nm in case of vibrations)	
Material	Aluminium profile, coated steel	

COMPONENTS

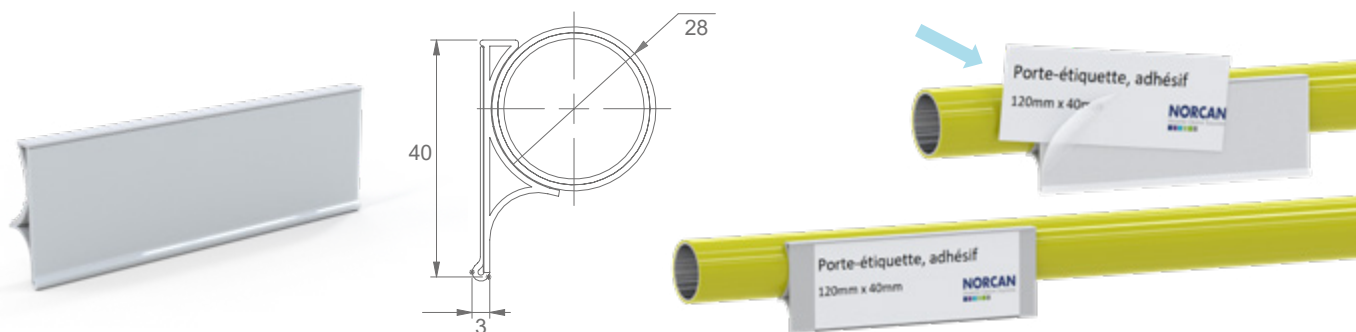
1x Adjustable arm for flat screens	
2x M6x16 Zinc-plated countersunk screw	
2x M6 Zinc-plated spring nut	
4x M5x16 Zinc-plated round socket head screw	
4x M4x16 Zinc-plated round socket head screw	
4x M5 Zinc-plated washer	



Adhesive label holder

SPECIFICATIONS

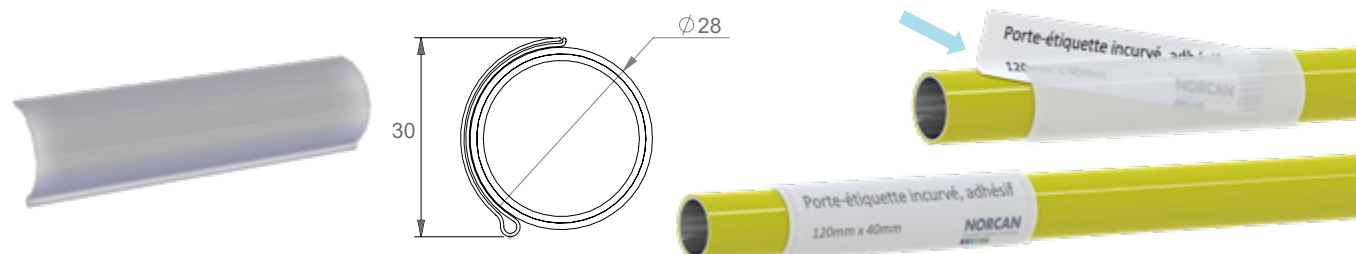
References	Adhesive label holder, 120mm x 40mm Adhesive label holder, 2000mm x 40mm	ACC-F139000 PRO-F039000
Description	For steel pipes of diameter 28mm For labels of 120mm x 38mm	
Material	Hard PVC plastic	



Curved adhesive label holder

SPECIFICATIONS

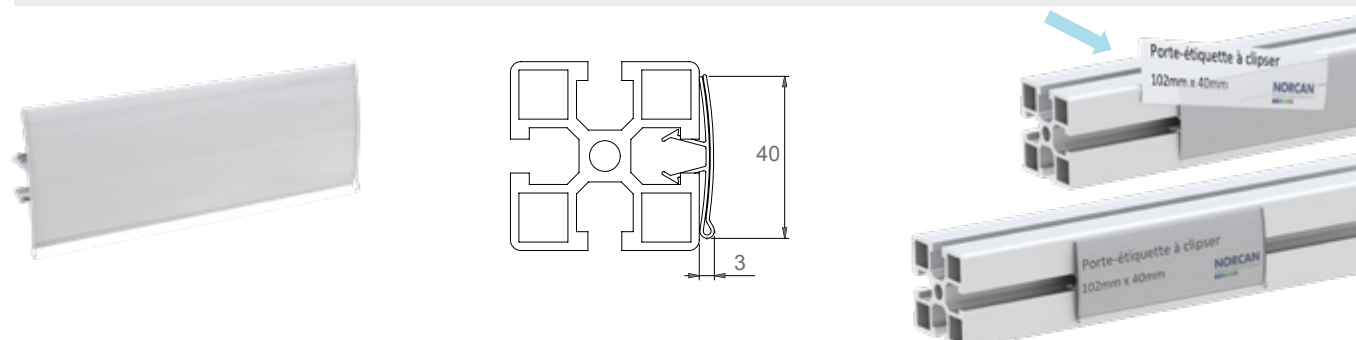
References	Curved adhesive label holder, 120mm x 40mm Curved adhesive label holder, 2000mm x 40mm	ACC-F139200 PRO-F039200
Description	For steel pipes of diameter 28mm For labels of 120mm x 38mm	
Material	Hard PVC plastic	



Label clip

SPECIFICATIONS

References	Label clip, 102mm x 40mm Label clip, 2000mm x 40mm	ACC-N139000 PRO-N039000
Description	To clip in the slot of Norcan profiles For labels of 102mm x 38mm	
Material	Hard PVC plastic	



LED light IP65

SPECIFICATIONS

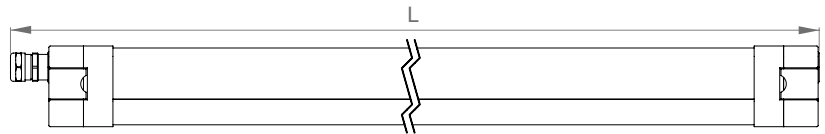
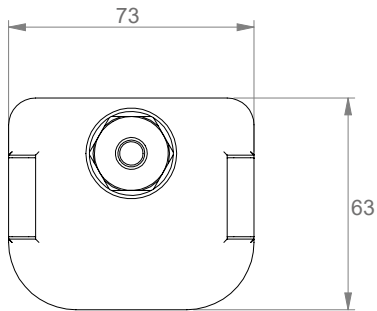
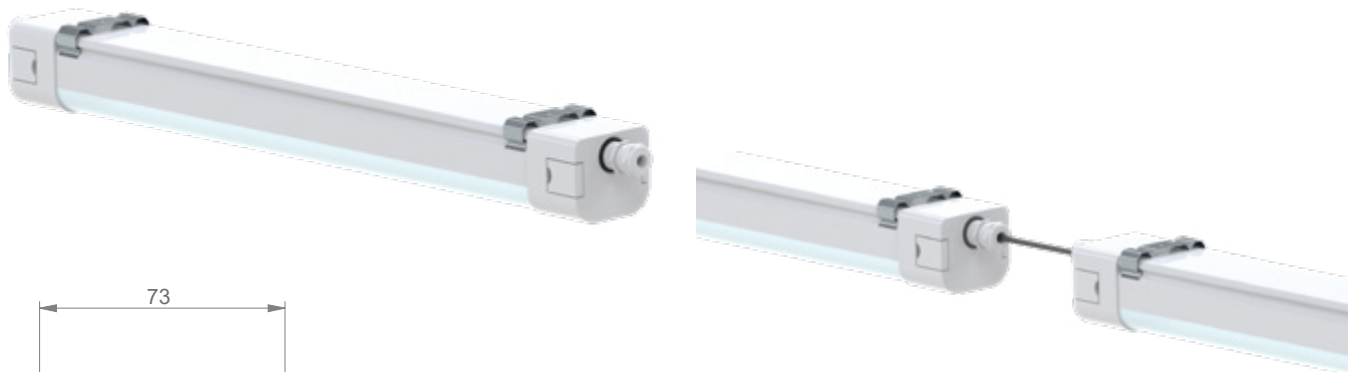
LED light IP65							
Power	CRI / RA	Scattering angle	Voltage	Color	Luminous flux	Measurements L x l x h	
20W	>80	160°	220-240V	5000K	2000 lumens	640x73x63mm	ACC-0042500
40W	>80	160°	220-240V	5000K	4000 lumens	1200x73x63 mm	ACC-0042700
60W	>80	160°	220-240V	5000K	6000 lumens	1483x73x63 mm	ACC-0042900

Frame in white ABS, light scatterer in translucent polycarbonate

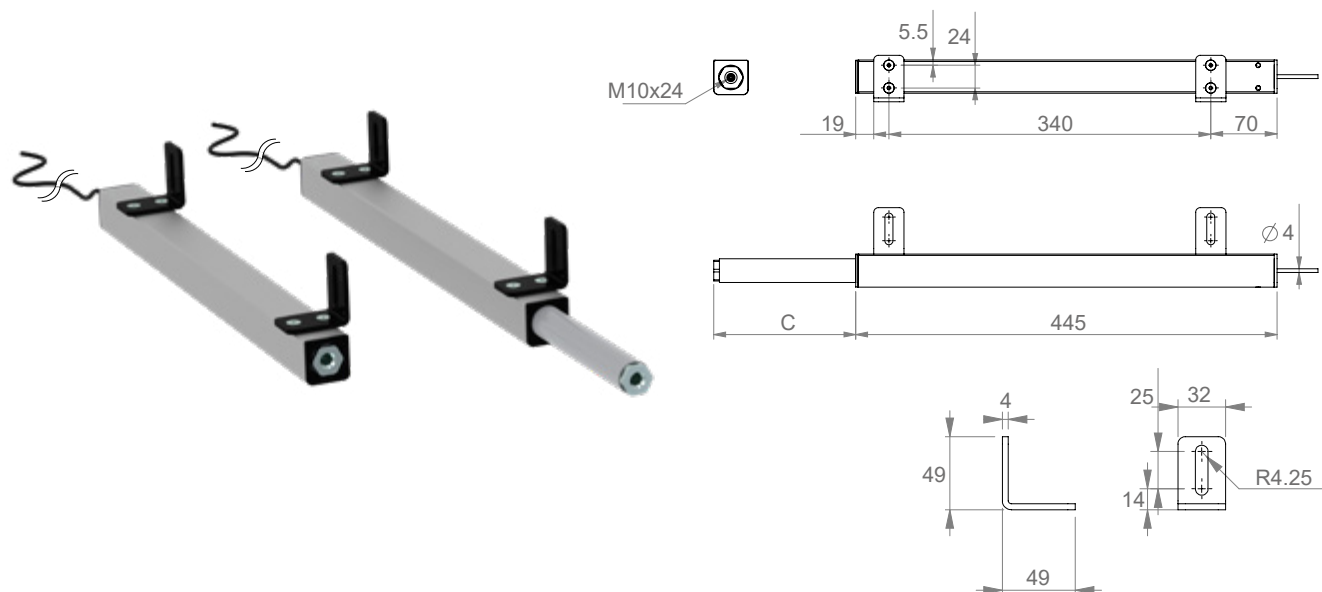
COMPONENTS

1x LED light	
2x Mounting clip	
2x Cable gland	
2x M5x16 zinc-plated round socket head screw	
2x M5 zinc-plated spring nut	

(Dimmable version on demand)



Hydraulic linear unit



SPECIFICATIONS

Reference	Hydraulic linear unit	ACC-N107700
Description	Maximum load per unit : 1500N Cylinder stroke : 300mm Hydraulic hose's length : 4000mm M10 x 24 tapping at the end Hydraulic hose pre-filled with oil Warning : not suited for frequent uses / requires a minimum restoring force of 70N	
Material	Aluminium profile, cast aluminium, coated steel, brass, ABS	

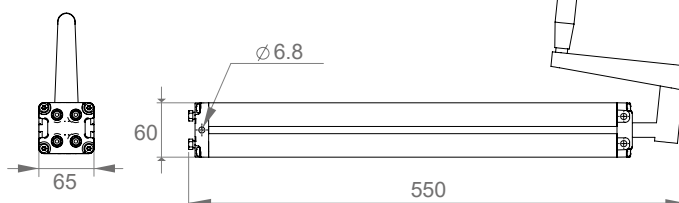
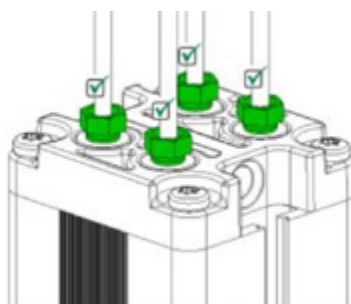
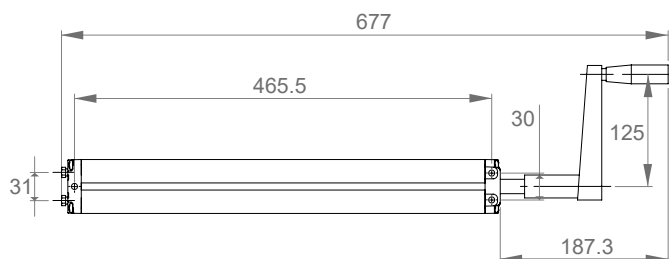
COMPONENTS

1x Linear unit	
2x Corner triangle for assembly	
4x M5x8 zinc-plated countersunk screw	
2x M8x20 zinc-plated round socket head screw	
2x M8 zinc-plated spring nut	

(Several other configurations on demand, cylinder stroke, maximum load, etc.)



Hydraulic pump with (crank) handle

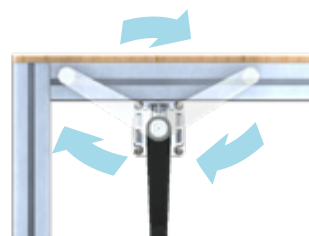


SPECIFICATIONS

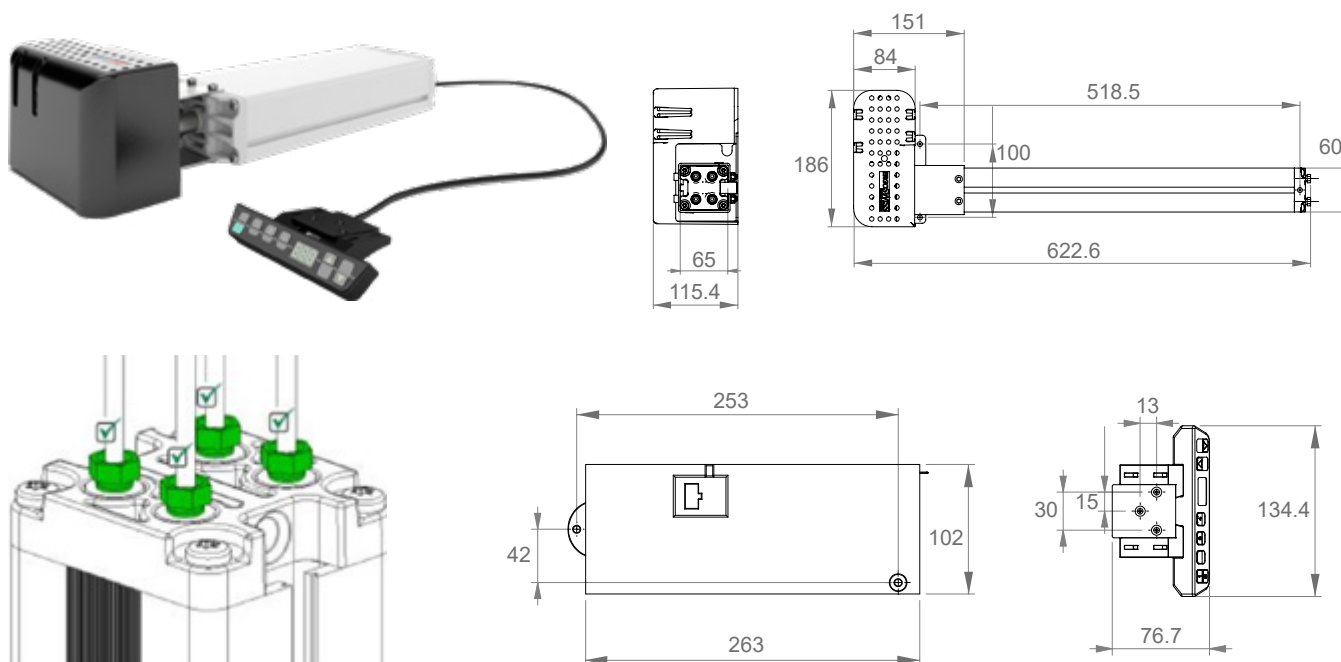
Reference	Hydraulic pump with (crank) handle (for hydraulic linear unit)	ACC-N107400
Description	<p>Maximum load 3500N For the actuation of 3 to 4 linear units (ACC-N107700) Maximum rise speed 5mm per crank turn on our hydraulic linear unit ACC-N107700 Pump pre-filled with oil Warning : not suitable for frequent uses (maximum 1 minute and ratio work / rest = 1/20)</p>	
Material	Aluminium profile, cast aluminium, coated steel, brass, ABS	

COMPONENTS

1x Pump with retractable crank	
3x M6 zinc-plated spring nut	
1x M6x70 zinc-plated countersunk screw	
2x M6x80 zinc-plated countersunk screw	
1x Ball extraction magnet	



Motorized hydraulic pump



SPECIFICATIONS

Reference	Motorized hydraulic pump (for hydraulic linear unit)	ACC-N108400
Description	<p>Maximum load 3500N For the actuation of 3 to 4 linear units (ACC-N107700) If combined with hydraulic linear units ACC-N107700, its stroke will be limited to 280mm. Maximum rise speed 15mm/s on our hydraulic linear unit ACC-N107700 Pump pre-filled with oil Power supply : single-phase 230V Protection class IP30 (motor and remote control) and IP20 (control box) Warning : not suitable for frequent uses (maximum 1 minute and ratio work / rest = 1/20)</p>	
Material	Aluminium profile, cast aluminium, coated steel, brass, ABS	

COMPONENTS

1x Pump + power supply unit + wired remote	
1x M6x80 zinc-plated countersunk screw	
3x M6 zinc-plated spring nut	
4x M4x16 zinc-plated low socket head screw	
4x M8 zinc-plated 13x13 nut	
2x M6x16 zinc-plated countersunk screw	
1x Ball extraction magnet	



NORCAN

NORCAN FRANCE

48 rue des aviateurs
BP 60120
F-67503 Haguenau Cedex
+33 3 88 93 26 26
info@mynorcan.com

FILIALES • SUBSIDIARIES • TOCHTERGESELLSCHAFTEN

NORCAN DEUTSCHLAND

Dreherstrasse 3
D - 76437 Rastatt
+49 72 22 83 00 41
info@mynorcan.de

NORCAN HISPANICA

P.I. SUD - Av. Valles, 38
E - 08440 Cardedeu
+34 938 444 310
info@mynorcan.es

NORCAN MAROC

Ilôt 26B, Bâtiment D1 RDC
Tanger Free Zone
MA - 90000 Tanger
+212 539 401 297
info@mynorcan.ma

NORCAN POLSKA

Ul. Przemysłowa 25,
PL - 32-083 Balice
+48 12 258 70 60
info@mynorcan.pl

LP INNOVATION (NORCAN SVENSKA)

Bergsbrunnagatan 11
SE 753 23 UPPSALA
+46 18 14 52 14
info@lpinnovation.se

PARTENAIRES • PARTNERS • PARTNER

BACRON BV

Telgenweg 30
8111 CM HEETEN
+31 572 380 543
info@bacron.nl

INTERNATIONAL PROCESS CONCEPT

Rue des Entrepreneurs
Zone Industrielle Charguia 2
TN2035 TUNIS
+216 31 39 81 50
contact@process-concept.com

LMI SOLUTIONS LTD

Unit 2, Kirkless Industrial Estate
Cale Lane
Wigan, WN2 1 HQ, UK
+44 1942 82 00 88
sales@lmiltd.com

PROFICAN OY

Marjakankaantie 9 B
FI-85100 KALAJOKI
+358 2 533 1900
info@profican.fi

About NORCAN

Founded in 1987, NORCAN is leader in France and one of the key players in Europe considering customized mechanical solutions based on aluminium profiles. NORCAN produces several thousand applications per year through its main site in Alsace, subsidiaries and a network of partners abroad. In addition, NORCAN integrates the SHERPA® range of mobile and collaborative robots. For more information, please visit our website at www.mynorcan.com.

